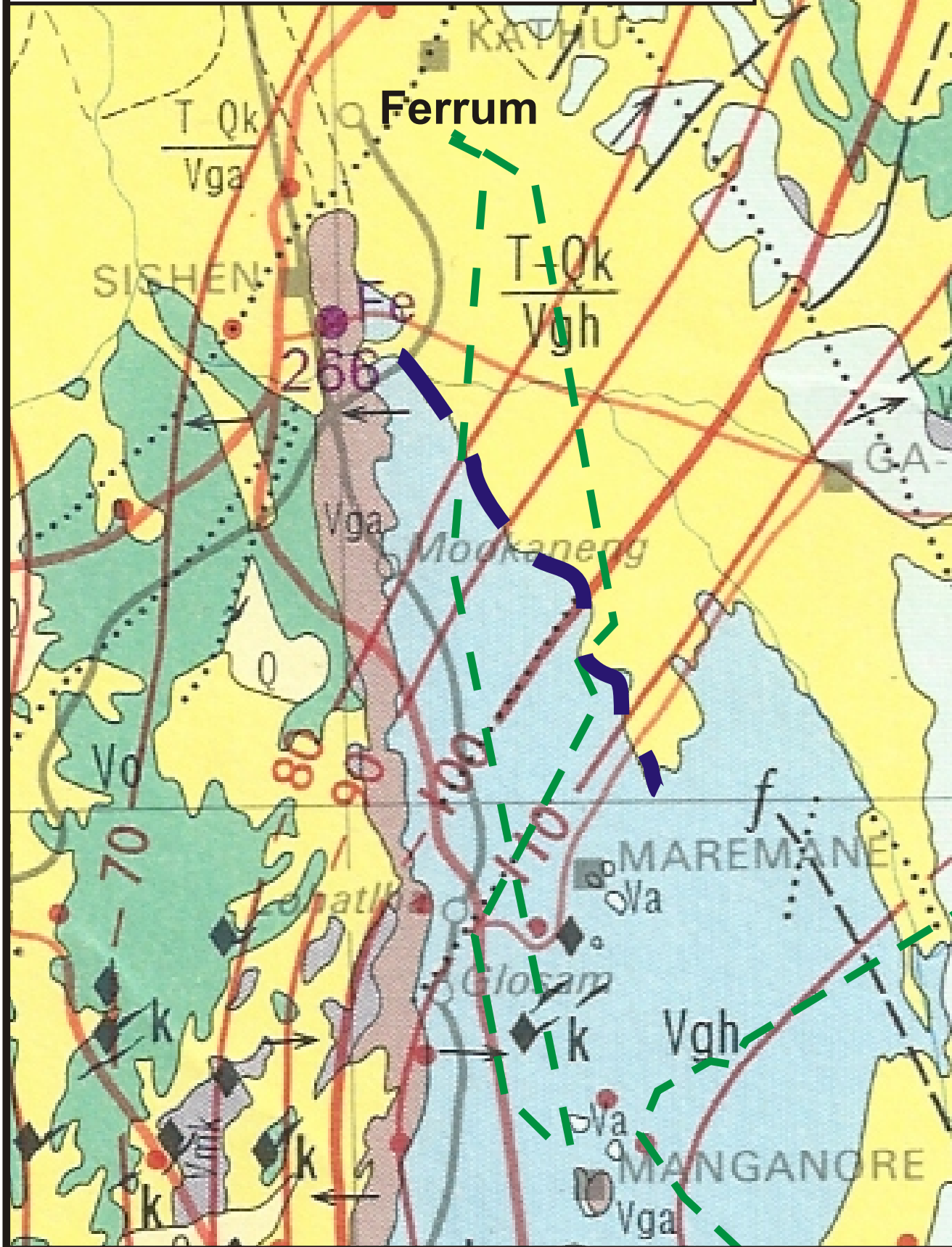


Figure 5: ESKOM: Dealesville - Kimberley - Kathu  
Manganore to Ferrum Substation  
Provisional Engineering Geology Map Scaled to 1:250 000



Legend:  
 Border of study area  
 Inferred zone boundary

Report by:  
**GEOSSET cc**  
 CK 99/65610/23  
 RAADGEWENDE INGENIEURS- EN OMGEWINGSGEOLOE  
 CONSULTING ENGINEERING AND ENVIRONMENTAL GEOLOGISTS  
 POSBUS/PO BOX 60995 KARENPAK 0118 WEBFAX: 086 658 3190  
 TEL/FAX: (+2712)(0)12 525 1004  
 CELL: (+2782)(0)82 925 4075  
 e-mail: davidsvdm@webmail.co.za  
 Ingenieursgeoloog Engineering Geologist **David S. van der Merwe**  
 Bsc.(Hons.)(Eng. Geol.), Pr.Sci.Nat.; MSAIEG; MEESG

**Legend Indicating Expected Site Classes Lithology**

<b>T-Qk</b>	Calcrete calcified pandune & limestone	C2/H1 to CHR / PD
<b>Vo</b>	Andesite: Griqualand West Supergroup	C2/H1
<b>Va</b>	Iron Formation: Asbestos Hills	CHR/PD
<b>Vgh</b>	Dolomite, limestone & chert: Ghaap Plateau	CHR/PD

**Possible Site Class**

**Scanned Geology Map: Original Scale 1: 1 000 000**

